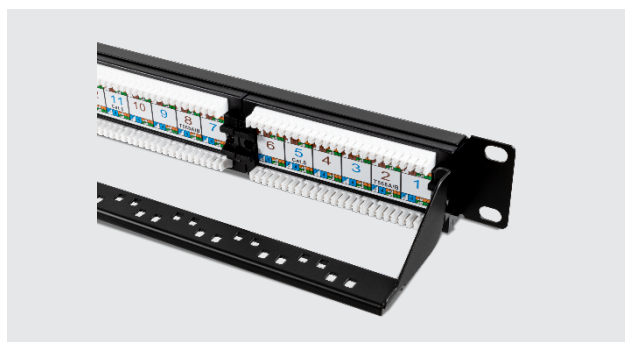


## PATCH PANEL 24 PORTS FTP

| P/N       | EAN           | WIDTH | DEPTH | HEIGHT | WEIGHT | PACKAGING |       |        |        |           |
|-----------|---------------|-------|-------|--------|--------|-----------|-------|--------|--------|-----------|
|           |               |       |       |        |        | WIDTH     | DEPTH | HEIGHT | WEIGHT | VOLUMN M³ |
| 80.24.05F | 6940533544432 | 480   | 110   | 1U     | 1,685  | 500       | 140   | 58     | 1,859  | 0,0040    |
| 80.24.06F | 6940533544449 | 480   | 110   | 1U     | 1,675  | 500       | 140   | 58     | 1,849  | 0,0040    |

## ACCESORIES

To expand, complete or improve the installation, Aiten Data also has all the necessary accessories for its electronic, computer or telecommunications equipment, whether basic systems or complex data centers.



Aiten Data presents two 24-port patch panels: the one from Category 5 and the other from Category 6.

They are essentially designed for the distribution of network cabling. The sides have easy anchor profiles in the rack cabinets.

They have been manufactured in cold-rolled steel and finished in black anti-rust paint and powder coated. Both models have a standard width of 19" and 1U high, 24 connectors/ports RJ45 FTP special for voice and data networks.

## MAIN FEATURES

- 24 x RJ45 ports.
- 19" 1U.
- Category 6 or 5 FTP.

## STANDARDS COMPLIANCE

Aiten Data accessories are under standards: ANSI / EIA RS-310-D; IEC297-2; DIN 41494; PART1; DIN 41494; PART7; ETSI; EC; ROHS; ISO 9001.